

# THE *Signature* HEALING ARTS PROGRAM



SCRIPPS MEMORIAL HOSPITAL LA JOLLA NEW HOSPITAL TOWER

# Dear Friends,



I am always humbled by the generosity of our Scripps supporters and donors who help ensure patients receive the highest quality care here at Scripps Health. **That's why it is my honor to introduce our Signature Healing Arts Program at Scripps Memorial Hospital La Jolla.**

This collaborative effort brings together highly acclaimed artists, leading art experts and generous patrons dedicated to enhancing the comfort and healing of patients—and the enjoyment of visitors and staff.

This program is based on the growing body of research that shows how specific types of art in

hospital settings reduce stress, pain and anxiety, while making the entire health care experience better for everyone. We've engaged experts in this unique field to select artists from across the country, with an emphasis on San Diego, whose work reflects the principles of healing art. These artists have envisioned artworks, which will be displayed in the new hospital tower at Scripps La Jolla. Dozens of "concept design" renderings were submitted, and those that were chosen are included in this catalog.

From original oil paintings and watercolors to fused glass and paper-cut collage, many pieces represent something iconic and uplifting about La Jolla, while others visually represent the innovation, compassion and caring of Scripps. Please take your time to view each thought-provoking concept, and feel free to visit those already commissioned and on display in Prebys Cardiovascular Institute.

Scripps La Jolla's Healing Arts Program is made possible by the generosity of donors, who recognize the importance of aesthetics, and its role in health and well-being. In fact, the artwork you see in this catalog will be funded 100% through philanthropy.

I hope you will consider commissioning an original piece of art for the new hospital tower. Your gift will be used to transform an artist's concept into a reality and toward the construction of our new replacement hospital. Please accept my personal thanks for investing in this unique program. Through philanthropy, you help Scripps heal, enhance and save lives.

Sincerely,

A handwritten signature in black ink that reads "John B. Engle". The signature is fluid and cursive, with the first letters of the first and last names being capitalized and prominent.

John B. Engle  
Corporate Senior Vice President  
Chief Development Officer  
Scripps Health

For more information about becoming a Healing Arts patron, please visit [Scripps.org/HealingArts](https://www.scripps.org/HealingArts).

# Transforming the Health Care Experience through the Arts



**Annette Ridenour** has been a leader in health care design and arts in health for more than 40 years as president of Aesthetics, Inc. She has been described as a practical visionary for her ability to combine explorative thought with strategic thinking, focused upon implementation. She is a natural group leader and a practitioner of Generative Design, a process that fosters the expansion and evolution of core design principals over the long lifespan of projects. Through these processes, Annette guides health care leadership in the creation of art programs that support their institutional mission and goals, and helps improve the emotional level of satisfaction of patients, visitors and staff.

Annette has been a founding member of two national arts organizations: *The Society of Arts in Health* (SAH), where she served as National President, and the *National Organization of Arts in Health* (NOAH). As the co-founder and board member of NOAH, she has helped guide the field, including the creation of a *New Curriculum for Arts in Health for Arts Practitioners*, the basis of the first certification available in the field (Essentials of Arts in Health Certificate).

Annette co-authored *Transforming the Healthcare Experience through the Arts* with former Rady Children's Hospital CEO, Blair Sadler, and has also contributed numerous chapters to other books, most recently "Managing Arts Programs in Healthcare" edited by Patricia Dewey.

She has received numerous awards including:

**HFSE:** Founders Award, Lifetime Achievement in Arts in Healthcare

**Society for Arts in Healthcare:**

Distinguished Fellow

Lifetime Achievement Award

**International Academy for Design and Health:**

Use of Art in the Patient Environment, International Winner, 2012

Use of Art in Public and Private Spaces, Highly Commended, 2017

Innovation: Rejuvenation Station, 2019: Stress-relieving video & audio booth for clinical staff

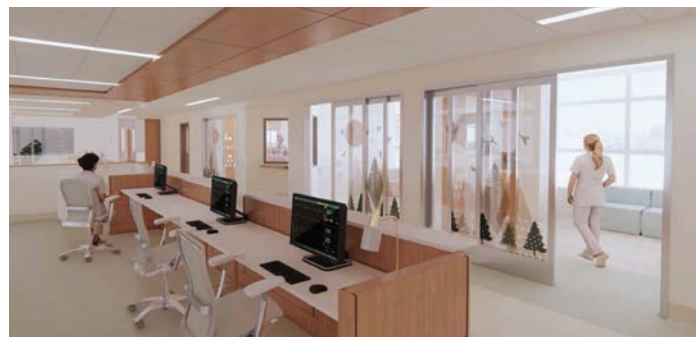
**The Generative Space Award:**

St. Joseph Oakland Hospital, 2012

Rejuvenation Station, 2019: Stress-relieving video & audio booth for clinical staff

Annette assists health care organizations in developing arts programs for new projects and existing facilities. Examples of Annette's pioneering work are the award-winning art program at Lucile Packard Children's Hospital at Stanford, Penn State Health Hampden and Lancaster Medical Centers, and Scripps Health. Annette has been working as an art consultant for Scripps Health for more than 20 years.

# Scripps Health Foundation Here for Good Campaign



## OUR VISION

Philanthropy is essential to helping Scripps Memorial Hospital La Jolla build a new, 433,000-square-foot hospital tower on the campus, part of its master plan for growth in the next decade. With anticipated completion and opening for patient care in 2025, this new tower will include 96 beds across three medical/surgical floors, 12 medical/surgical observation bays, radiology imaging suites, operating rooms, and 51 flexible pre- and post-op rooms. All these spaces will incorporate state-of-the-art equipment.

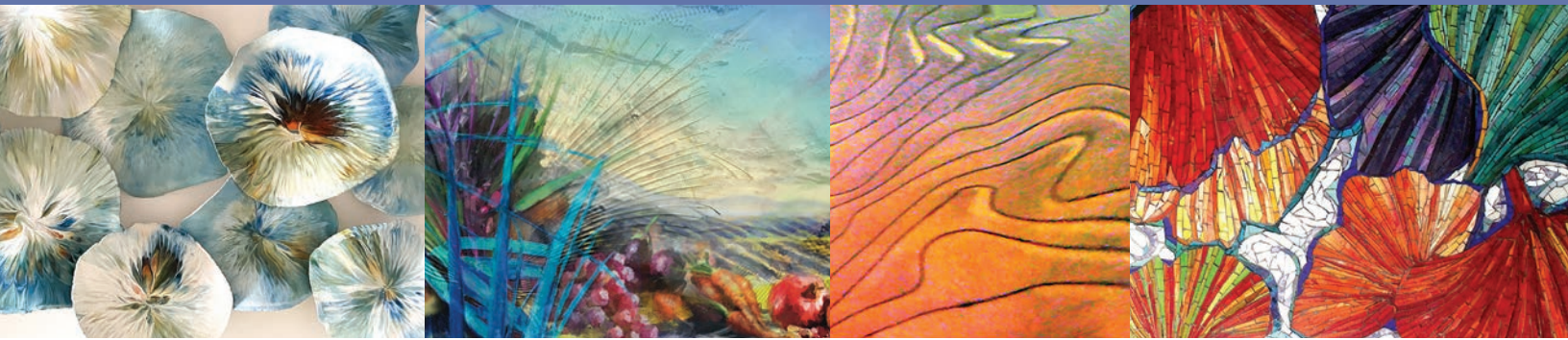
The new tower will also be home to a three-floor dedicated women's center with a postpartum floor featuring all private rooms, sitting alcoves, a nursery overlooking the Prebys rooftop garden and a boutique with items that support a new mother's needs. The labor and delivery floor will incorporate rooms with labor tubs, operating rooms, antepartum rooms and a family waiting area with an outdoor patio. In addition, there will be a new neonatal intensive care unit (NICU) staffed and equipped to provide the latest advancements to care for babies with health concerns at birth.

In keeping with our focus on delivering the right care in the right setting, the plan takes into consideration changing patient-centered health care trends, such as private patient rooms with designated family areas; nurse proximity to patients; the evolution of wireless technology and advanced equipment; and efficient use of natural resources.

By giving for good, your support will enable Scripps Memorial Hospital La Jolla to make a difference in the health and quality of life of our community. We've been here for nearly 100 years, and we're invested in being here far into the future.

We're here for good—and we'd like you to join us at Scripps Memorial Hospital La Jolla. Learn more about our Here for Good Campaign at [Scripps.org/HereForGoodCampaign](https://scripps.org/HereForGoodCampaign).

# The Signature Collection



**The Signature Collection for the Scripps Memorial Hospital La Jolla New Hospital Tower** celebrates the natural beauty of the San Diego region. Accomplished artists of our region and beyond were asked to submit original designs in a variety of media, which represent the “Nature Experience” of being in San Diego.

The medias of painting, mosaic, fused and laminated glass, copper enamel and colored concrete provide different expressions of nature, and multiple ways for patients, caregivers and families to experience a respite from their clinical challenges. The Signature Collection Artworks are located in major public spaces of the new tower, from elevator lobbies and waiting areas to Colors Café.

In the design of their artwork commissions, each artist was asked to imagine themselves as a patient and use their media to provide artwork that would be uplifting and restorative.

Biophilic expression guides much of the sensibilities we seek for environments supportive to healing, based on abundant research on the psychological and physical health benefits of nature. In this project, we feature artworks that include material textures, dimensional forms and objects, in order to encourage additional engagement by viewers. These “enriched environments,” have been shown by neuroscientists and biologists as contributing to positive outcomes in health, learning and relationships.

We have heard many stories of how the art in Scripps Health hospitals have provided a respite for many patients. We invite you to continue in the tradition of our many patrons who sponsor Signature Collection artworks at Scripps locations, which have become a part of our legacy of hope and healing.

**“San Diego is the most  
biologically rich county in the  
continental United States.”**

**– The Nature Conservancy**

# Table of Contents

## **ELEVATOR LOBBIES**

Lynn Basa . . . . .	7
Greg Ito . . . . .	8
Paul Bond . . . . .	9
Lynn Heitler . . . . .	10
Linda Leviton . . . . .	12
Alex Hirsch . . . . .	13
Virginia Howlett . . . . .	14

## **WAITING LOUNGES**

Jeanne Rosen Sofen . . . . .	16
Michael Ireland . . . . .	17
Bhavna Mehta . . . . .	18
Jen Glover Riggs . . . . .	19
Joseph Bellacera . . . . .	20
Irina Cumberland . . . . .	21
Michael Azgour . . . . .	22
Sherry Salito-Forsen . . . . .	23

## **DINING AREA**

Sandra & Carl Bryant . . . . .	25
Juanita Adelman . . . . .	26
Debra D'Souza . . . . .	27
Dayton Claudio . . . . .	28

# ELEVATOR LOBBIES

- Level 1: Lynn Basa
- Level 2: Greg Ito
- Level 2M: Paul Bond
- Level 3: Lynn Heitler
- Level 4: Linda Leviton
- Level 5: Alex Hirsch
- Level 6: Virginia Howlett
- Level 7: Lynn Heitler



## CONCEPT DESIGN | Media: Glass Mosaic

Each flower in Flourish is unique in its shape, size and color, symbolizing the diverse personalities and experiences within each of us. It invites viewers to reflect on the transient nature of human existence, serving as a gentle reminder to appreciate the present, the relationships we forge, and the legacies we leave behind, as we all pass through the garden of life.



ARTIST'S PREVIOUS WORK

LEVEL 1 **1** **1.F.01**  
42" h x 120" w x 2.5" d  
media: glass mosaic on panel with aluminum substrate  
Est. Weight: 175 LBS/ 5 PSF  
Artist: Lynn Basa



Basa lives in Chicago. Her work is included in numerous public, private, and museum collections such as the Museum of Arts and Design (New York), Museum of Fine Arts (Boston, and many others). Her work was also part of the Smithsonian Institute's landmark Threadworks exhibit.

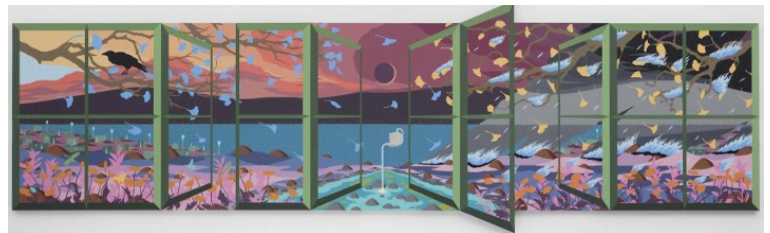
She taught in the Sculpture Department at SAIC, the Hyde Park Arts Center and Creative Capital. Basa has an MFA from the School of the Art Institute of Chicago and an MPA in public art policy from the University of Washington.





CONCEPT DESIGN | Media: Acrylic on canvas

The work I am creating for Scripps La Jolla is called “The Caretaker,” and is inspired by my grandmother. At 99 years old she has been the rock for our family, and this work is dedicated to her. The piece is a four-panel composition with a pouring teapot in the center, symbolizing the nexus of family, nurture and care. The white leaves on the trees and distant poppy fields represent hope and rebirth, all important symbols to evoke strength and positivity for all visitors and staff in the hospital setting.



ARTIST'S PREVIOUS WORK



Ito (b. 1987, Los Angeles, CA) earned his BFA from San Francisco Art Institute in 2008. His work has been exhibited widely in solo and group exhibitions including: Institute of Contemporary Art, San Diego, CA; Long Beach Museum of Art; Maki Gallery, Tokyo, Japan; Anat Ebgi, Los Angeles, CA; SUPRS Gallery, Beijing, China; Lyles and King, New York, NY; Jeffrey Deitch, New York, NY and Yerba Buena Center for the Arts (YBCA), San Francisco, CA.

Ito's work is included in the permanent collections of the Institute of Contemporary Art Miami. Ito lives and works in Los Angeles, CA. His work is in the collection of the LACMA, the Hammer Museum and Cedars Sinai.



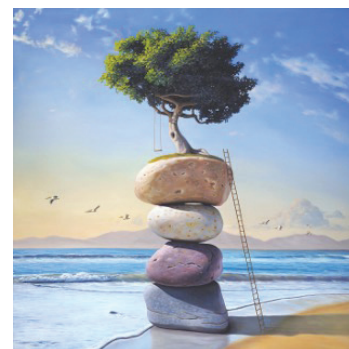
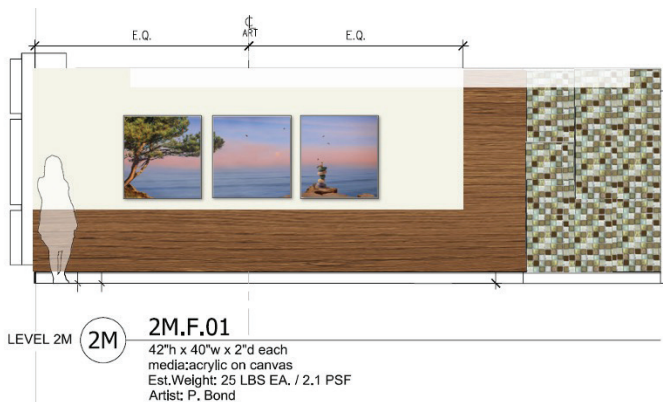
Scan here to learn more about the artist's work.

*Greg Ito*



## CONCEPT DESIGN | Media: Acrylic on canvas

I'm a San Diego native who attended UCSD and spent much of my youth surfing under the cliffs of Blacks Beach and Torrey Pines. So when asked to create a painting for this hospital, it was easy to envision a potential scene. The iconic Torrey Pine standing sentinel on the cliff overlooking the waves rolling in from the Pacific Ocean. On another panel is a cairn – a tower of balanced stones traditionally used to mark either a location or point in time for travelers. Here it marks the creation of this hospital building, one where travelers pass through on their journey to healing. The cairn is being built by a pair of playful squirrels, ostensibly to reach the butterflies overhead, which represent transformation and joy. Symbolic of patient's transformation to health, as well as newborns exiting their mothers' cocoons into a new life.



ARTIST'S PREVIOUS WORK



Bond's award-winning magic realism paintings live in the spaces between dreaming and reality. His art has been featured in galleries and museums, including New Mexico's Gateway Museum and the San Diego Art Institute. His paintings are in private collections throughout the U.S. and worldwide. Corporate collections include Fox, Warner Bros and NBC Studios, Royal Caribbean International, Scripps Memorial Hospital Encinitas, Marriott Hotels, and Stanford Children's Hospital. Bond currently divides his time between Southern California and Costa Rica.



Scan here to learn more about the artist's work.



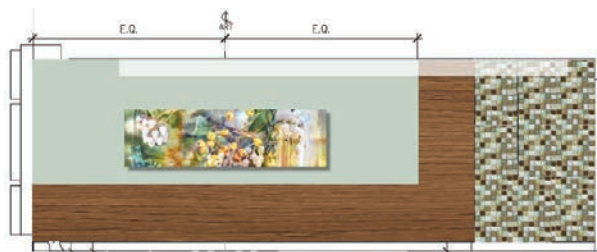
CONCEPT DESIGN 1 - BELLA | LEVEL 3 | Media: Print on second surface acrylic



CONCEPT DESIGN 2 - HORAI | LEVEL 7 | Media: Print on second surface acrylic

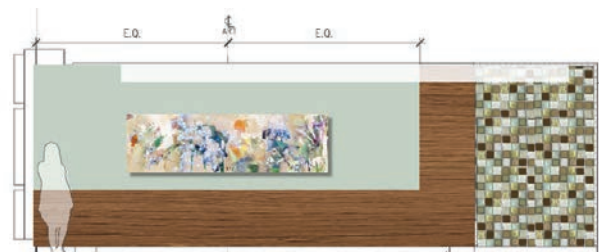
The two images you have selected, "Bella" and "Horai," are perfect examples of the layered art we create at Lynnel. Each of these images is a combination of original photography and my handwork. The modification of these pieces are then digitally composited. My years of experience creating monotypes prepared me for this unique form of art. All of our work can be color modified, cropped and scaled to the client's specification. I am happy to present to you original artwork created in a very specialized manner. The Lynnel portfolio contains more than 2500 images to select from, all of which are primarily intended for health care installations.

In addition to being an artist, I am also a psychotherapist. I have merged the disciplines of these two careers to create thoughtful artwork for health care settings.



LEVEL 3 **3** **3.F.01**  
 36"h x120"w x 1.5"d  
 media: 1/2" acrylic panel  
 Est.Weight: 75 LBS/ 2.5 PSF  
 Artist: L. Heitler

FLOOR 3



LEVEL 7 **7** **7.F.01**  
 36"h x120"w x 1.5"d  
 media: 1/2" acrylic panel  
 Est.Weight: 75 LBS/ 2.5 PSF  
 Artist: L. Heitler

FLOOR 7



My study of art began in elementary school when a teacher brought in cans of house paint and introduced our class to the experience of painting. That moment unleashed a lifetime of art expression. Formally I studied art at the University of Colorado, Boulder, in the summers after my junior and senior years of high school. I lived in the dorm and went to art classes all day. I loved it. From there I went to the University of California and majored in art.

At Berkeley I met many well-known artists and began to find my voice. When I moved to Washington, DC, I went to the Corcoran Museum School of Art (now the Corcoran School of the Arts & Design, at George Washington University). Later when I returned to Colorado, I spent two summers at the Anderson Ranch Arts Center in Snowmass. In addition to painting, I also studied and practiced printmaking. My informal training in this process came through working with several master printers who taught me what was possible in the production of monoprints.

Fifteen years ago, I co-founded the Denver-based company Lynnel Art to Form. This allowed me the opportunity to learn digital "layering" of original artwork, which can then be applied to glass and other substrates.

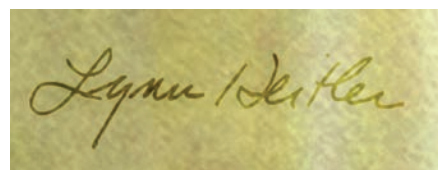
The collaboration involved in producing large scale artful hanging sculptures nationally has also been a rewarding new chapter in my 50-year career as an artist. All of these experiences have been instrumental in my growth as an artist.

#### EDUCATION:

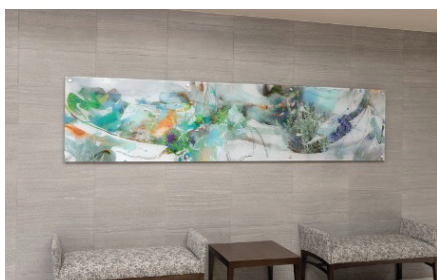
University of California, B. A., Fine Arts, Berkeley, CA  
Corcoran School of Art, Washington, D. C

#### MUSEUM REPRESENTATION AND JURIED EXHIBITIONS:

Vance Kirkland Museum, Denver CO, 2022  
Palm Springs Desert Museum National Juried Exhibition;  
Art Zone, An Eight-State Juried Show Denver, CO:  
Galeria Cooperativa de Artistas, 5th Exhibition, Seven States 1993, Tucson, AZ  
Amarillo Competition, Amarillo Art Center Juried Museum Show, 1993, Amarillo, TX  
Art Zone, A Seven-State Juried Show, 1989, First Prize in Watercolor, Denver, CO



*Scan here to  
learn more about  
the artist's work.*

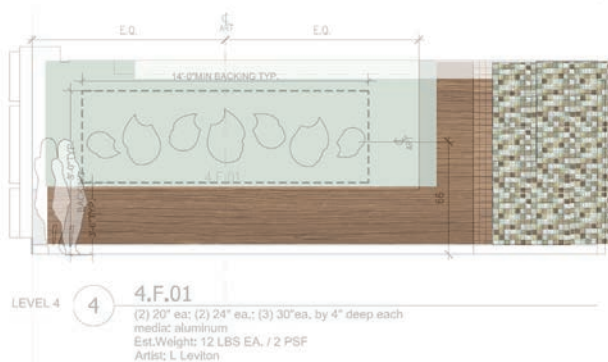


ARTIST'S  
PREVIOUS  
WORK



## CONCEPT DESIGN | Media: Aluminum

I will be creating seven-dimensional wall mounted vessels. The pieces are fabricated out of copper colored aluminum. Each vessel is just under 4 inches deep from the wall. They are each flooded with an overall color exposing the copper color along the rim and between each section of pattern. I then hand paint several patterns on each vessel using colors that relate back and forth between the vessels. Some patterns are repeated with variations. The repetition of colors and patterns keeps the eye moving over the seven pieces unifying them as a whole installation.



ARTIST'S PREVIOUS WORK



Linda Leviton has always been fascinated with the patterns found in nature. For the past 30 years she has been making commissioned pieces from metal, wood and wire. Her dimensional wall sculptures have been used in large institutional installations, donor walls and private commissions. Her work incorporates etching, welding, fold-forming and other metal forming techniques. She applies color with patinas, paint, colored lacquers and heat. Recently, she has turned to working with fabric, and is exploring hand-printing, dying and making non-traditional quilts.

Leviton's studio is next to her home in central Ohio. She attended the University of Cincinnati School of Design, Architecture and Art. Since 1993, she has exhibited nationally and internationally, and is installed in over 130 hospitals, universities, Fortune 500 companies, libraries, public and private settings nationwide.

### SELECTED COMMISSIONS:

- Sacred Heart University, Business School, Fairfield CT
- Mayo Clinic, Minnesota and Jacksonville, FL
- Cathay Airlines, Commission for 32 Jets, Hong Kong
- Michigan State University, National Superconducting Laboratory, East Lansing, OH
- Orlando World Center, Orlando, FL
- U.S. Army Research Institute of Medical Defense, Aberdeen MD

*Linda Leviton*



## CONCEPT DESIGN | Media: Fused Glass

The themes behind this design are spontaneity and levity, combined with order and consistency. People seem to benefit from some combination of these two energies in their lives. I do. Rhythm, or organization, helps us orient in time and often feel safe. Variation adds interest and keeps us more flexible to the unpredictable in life – both that which we enjoy and that which challenges us. I hope the bright palette uplifts patients, visitors and staff who pass by this fused glass triptych.



LEVEL 5 **5** **5.F.01**  
 32"x32": 32"x40": 32"x32" by 3" deep  
 media: fused glass  
 Est.Weight: 80 LBS (EA.) / 9.0 PSF  
 Artist: A Hirsch



ARTIST'S  
 PREVIOUS  
 WORK



Hirsch has a Master of Fine Arts and Painting from Washington University, St. Louis, MO, and both a Bachelor of Arts and Bachelor of Fine Arts, Painting and Printmaking from University of Michigan, Ann Arbor, MI. She developed her glass expertise working independently and in long established studios in Oregon, Scotland and Germany.

### PUBLIC AND CORPORATE COLLECTIONS:

City of Portland, OR; Good Samaritan Hospital, Washington; Oregon Health Sciences University, Oregon; Organization for Economic Cooperation and Development, France; Oregon State University, OR; Portland Museum of Art, Vivian and Gordon Gilkey Center for Prints and Drawings, OR; Southern Oregon University, OR; United States Embassy, Bulgaria; US AID, Uganda; Private collections across the USA, England and Japan

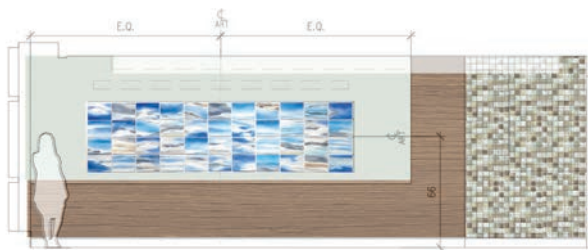


Scan here to learn more about the artist's work.

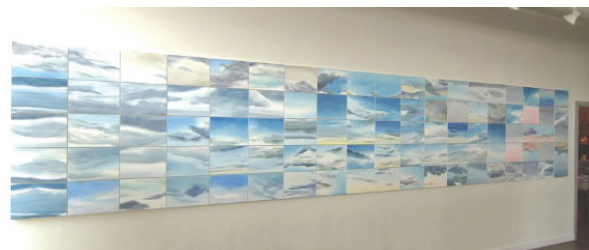


## CONCEPT DESIGN | Media: Mixed Media Watercolor Panels

44 Windows is an installation of 44 glimpses of San Diego skies. It collects moments of the contemplative joy we feel gazing at the sky as clouds float past, feeling the breeze off the water, knowing that even as time passes, we have this moment of beauty and calm. It's a large, arresting piece full of color and light, and it's a reminder of the ephemeral beauty of nature. The piece consists of 44 panels, in 4 rows and 11 columns, 42 inches tall by about 13 feet long. Each 10 x 14 x 3/4 inch panel has white sides, is fire-proofed before painting, and is sealed with UV-protective, waterproof acrylic varnish.



LEVEL 6 6 6.F.01  
(44) 10" h x 14" w x 2.5" d each panel (Total size 3'6" h x 13'3" w)  
media: acrylic on Ampersand Gessobord - wood & masonite Est. Weight:  
5 LBS EA / 2.1 PSF



ARTIST'S PREVIOUS WORK



Canadian-born artist Virginia Howlett creates abstract landscape paintings, photographic collages, and large installation pieces, all inspired by nature. Howlett is fascinated by the contemplative experience of landscape. She uses various media to communicate the sense of calm and mystery we all feel in the natural world. After years of creating watercolors of skies presented on panels, her recent work includes photographic collages on metal of "Mysterious Places" and oil paintings of water. She received a BFA with Distinction from Ohio State University and an MFA in Painting from the School of the Art Institute of Chicago. Formerly an Assistant Professor of Painting at Hampton University and at New Mexico Highlands University, Howlett won a Mellon Foundation grant to create artwork in Oaxaca, Mexico. She creates her work at an island cabin in British Columbia and in her San Diego studio. Her exhibitions include shows in San Diego, Seattle, New Mexico, Virginia, Ohio and Chicago, and her work is included in a number of public collections, including medical facilities and hospitals.



Scan here to learn more about the artist's work.

# WAITING LOUNGES

Level 1: Jeanne Rosen Sofen

Level 2: Michael Ireland

Level 2M: Bhavna Mehta

Level 3: Jen Glover Riggs

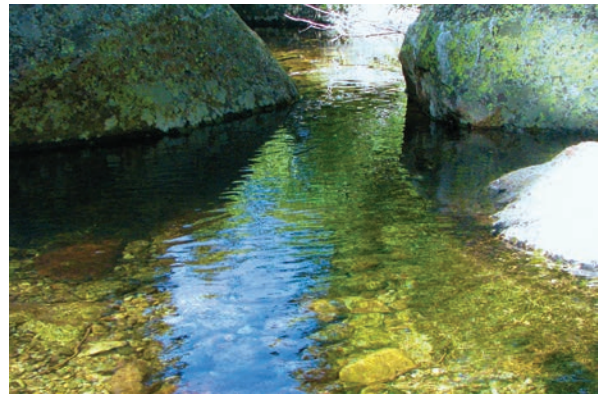
Level 4: Joseph Bellacera

Level 5: Irina Cumberland

Level 6: Michael Azgour

Level 7: Sherry Salito-Forsen

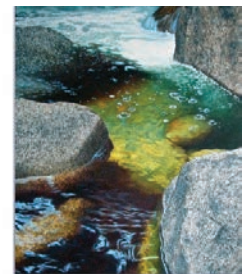
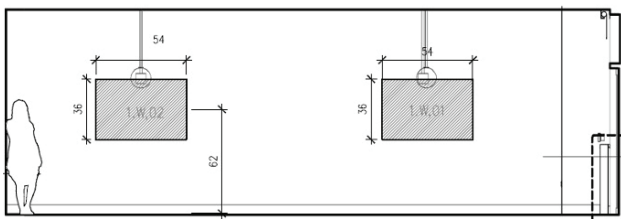




## CONCEPT DESIGN | Media: Mixed media on board

**Big Creek:** This extraordinary creek with its aqua waters runs through the coastal mountains of Big Sur. The elements of this scene, with the light slicing into the water, illuminating the bottom and the submerged rocks, and the large rock with the delicate branch of leaves in front of it, convey a sense of beauty and serenity. In my particular technique of painting, I incorporate various textured papers in order to describe the many textures of the subject matter (such as a boulder and rocks). Layers of richly painted papers are pieced together on the painting surface, and more layers of paint are added to bring the whole composition together.

**Belle Creek:** This beautiful creek flows through the wilderness of the Sierra Nevada Mountains. The composition has captivating patterns and movement, with jewel-like reflections, lichen-covered boulders, and golden submerged rocks. A viewer can spend a lot of quiet time absorbing all the details, gaining a sense of calm and peace. I will use textured papers for the rocks, in rich contrast to the smooth waters. In both paintings, my intention is to vividly convey a sense of being there in the woods, experiencing the exquisite beauty in nature and the deep interconnection we sense when we are out in such places.



ARTIST'S PREVIOUS WORK



Sofen received a B.A. in Fine Arts from the University of California, Santa Cruz (and was particularly influenced by artist Alan Gussow), while at the same time studying with Alan Gussow. After graduating, she worked as a designer and master craftsman for a decade at Bonny Doon Art Glass, a nationally-acclaimed studio. Over the years, she has continued to participate in numerous solo and group exhibitions in California, winning several awards. Her work is in private and public collections, including the Community Hospital of Monterey Peninsula, Plantronics Inc., and Cisco Systems, Prebys Cancer Center, at Scripps Mercy Hospital and the Lucille Packard Children's Hospital, Stanford Hospital.



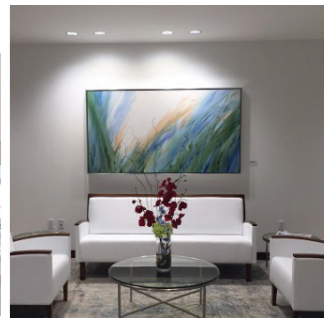
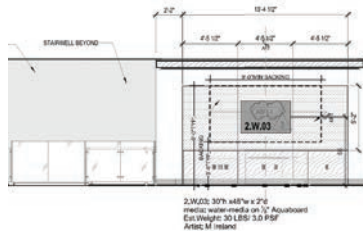
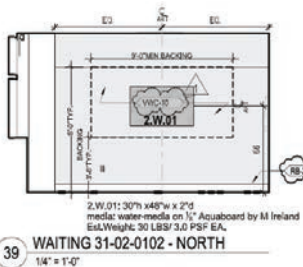
Scan here to learn more about the artist's work.

*Jeanne Rosen Sofen*



## CONCEPT DESIGN | Media: Water media on board

Abstract to a degree, my paintings evoke their themes directly from nature. Growth, Resilience, Strength and Balance are but a few. I embraced those attributes through arching strokes, a respect for value and sense of place along with a desire to give pause for reflection. As I began to discover and define the negative space in the work, it reminded me of an early lesson: We are defined by the space around us. Be respectful.



ARTIST'S PREVIOUS WORK



Ireland has participated in the creative process for more than 40 years beginning with his studies at the American Academy of Art in Chicago. Under the direction of master instructor, Irving Shapiro, he began to explore the effects of light and color through transparent watercolor. He soon developed a passion for the medium that continued throughout his life and career. Today Ireland is a nationally recognized painter, as well as an accomplished creative director and graphic designer. His painting style and technique challenges the scale and format associated with traditional transparent watercolor resulting in works measuring up more than twenty feet in length. This process and approach have led to his artwork being placed in public and private collections throughout the country.

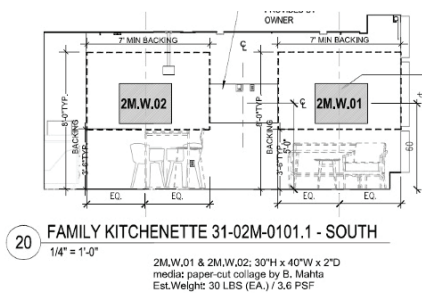


Scan here to learn more about the artist's work.



## CONCEPT DESIGN | Media: Paper cutting

Curious and colorful animals populate a community and provide companionship to each other. They open their windows and extend an invitation into the atmosphere. There is movement everywhere. There is air, light and growth. Plants and trees are essential to this conversation. They provide food and fuel, a place of rest, a lesson about time. What can we learn from these magnificent beings?



ARTIST'S PREVIOUS WORK



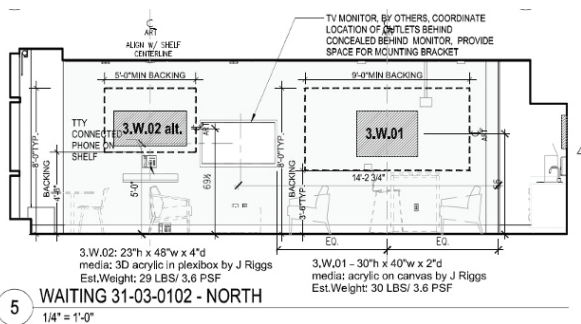
Mehta works with paper and fabric; cutting and embroidering to tell stories that combine figurative and landscape imagery with botanical motifs, text and shadows. Using paper as skin and thread to connect and mend, she makes work about relating and remembering. Mehta has exhibited widely in San Diego and Southern California. She is the recipient of the Individual Artist Fellowship grant (2021), Artists-In-Communities grant (2017, 2019) from the California Arts Council and the Creative Catalyst grant from The San Diego Foundation (2015). She has won multiple awards in juried shows and she was one of the San Diego Art Prize emerging artist winners. Her public commissions are fabricated in metal and installed at the YouTube theater in Los Angeles (2020) and Lakeside Country Library (2022).

*Bhavna Mehta*



## CONCEPT DESIGN | Media: Acrylic 3D paper and multi-layered acrylic and resin

I am thrilled to create these two pieces for Scripps Memorial Hospital La Jolla. When considering the design for this work, I was intrigued and excited by the idea of creating sister pieces where one is two dimensional and the other is three dimensional using the same color palette. Both pieces are created using circular marks that are reminiscent of the organic forms found in nature. Some examples of these forms can be seen in mushrooms, seashells, ferns, and branching rivers and coral. Together, these two pieces will create a joyful and peaceful peek into the natural world, and I cannot wait to bring them to life!



ARTIST'S PREVIOUS WORK



Riggs is best known for creating multi-layered artworks with acrylic and epoxy resin.

Her paintings have been shown in juried fine art shows both locally and regionally, and her commission work has been featured in art collections nationally. In October 2020, she was awarded the Betty Barker award for best in show for her painting Breathe No. 1 at the Carriage Barn Arts Center in New Canaan, CT. Riggs is a member of the Artist Collective of Westport, the Ridgefield Guild of Artists and the Carriage Barn Art Center in New Canaan. She is also represented by the WIT Gallery in Lenox, MA, Elisa Contemporary in NYC, as well as K Newby Gallery in Tucson, AZ.



Scan here to learn more about the artist's work.

*Jen Glover Riggs*

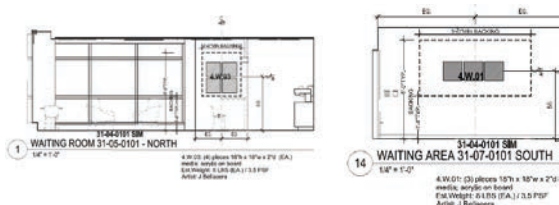


## CONCEPT DESIGN | Media: Acrylic and oil on panel

The focus of my series "Fields of Light" is the mosaic and rhythm of patterns evident on the agricultural landscape when viewed from above. I associate these aerial views with designs that I have seen in art from cultures around the world, from as close to home as American quilting to the ancient floor mosaics in Pompeii, which distinctly echo the man-made circular and square patterns marking the landscape throughout the United States.

It is my intention that this artwork be uplifting and creates a positive, expansive, healing state of mind. Imagery reflects our relationship with nature and reminds us that we are connected to the earth.

Studying this view from above has influenced the perception of my more immediate world. Ordinary textures and designs, such as botanical forms, water rhythms and mineral formations trigger similar associations. As I move through the environment, I discover that these visual codes exist everywhere and invigorate my sensory experience.



ARTIST'S PREVIOUS WORK



Nature and luminosity inspire the work of Joseph Bellacera. His primary subject matter is the perception of space, light, and patterning. This pertains to the vastness of nature as it relates to the landscape and its underlying macro and micro configurations.

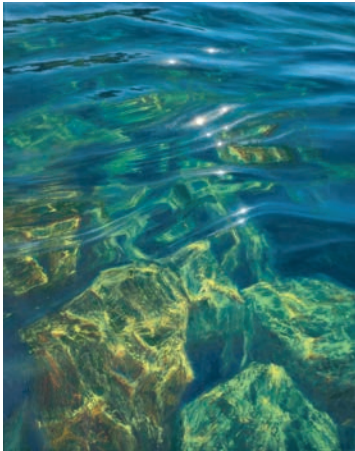
Bellacera studied art at several institutions including: Massachusetts College of Art; Humboldt State University where he received an MA degree; and University of California Santa Barbara where he received an MFA.

A very prolific artist, Bellacera exhibits in galleries and museums throughout the United States, and his work can be seen in many private and corporate collections as well as public institutions including hospitals, libraries and colleges.

SELECTED COLLECTIONS: University of California Davis Medical Center, Kaiser-Permanente Hospitals, Renown Health, Lodi Memorial Hospital, Sacramento County Primary Care Clinic, Embassy Suites, Hyatt Regency, JP Morgan Chase Bank, Hewlett-Packard, Central Oregon Community College, Carroll Burdick & McDonough Attorneys, Parker Development Co., Clarklift Team Power, Pension Associates, Allstar Investments, Oglivy Worldwide, Madera Children's Hospital, Riverside Regional Medical Center, West Yost Associates, Winters Community



Scan here to learn more about the artist's work.



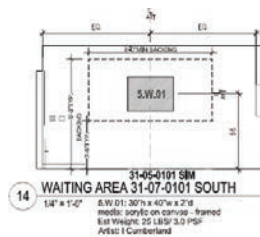
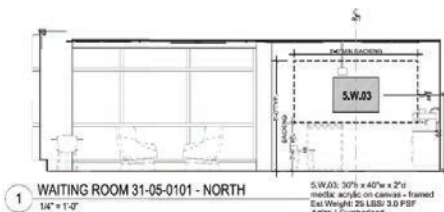
CONCEPT DESIGN | Media: Oil on linen

“Universe in Water” is about connection. The intricate lace of things and events that we are incredibly fortunate to be a part of. No galaxy or electron is completely independent of all other things.

That photon of light could have easily missed the Earth and kept traveling through the vastness of space forever. Instead, it ended its life in my eye, starting a chain of events that will go on for a long time.

First, it made me think a thought. The idea to paint a painting that I share with the world. Other people see it. Get inspired. Have an idea. An idea they decide to implement into all the wonderful things that people do! And so it goes on.

And it all started with a single unassuming bit of light half the galaxy away.



ARTIST'S PREVIOUS WORK



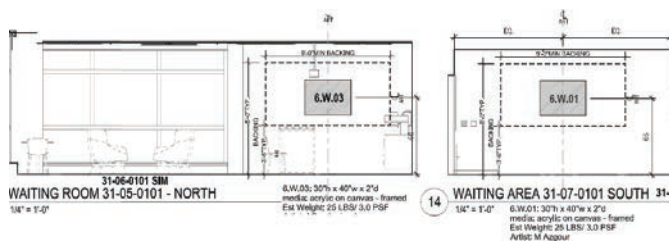
Cumberland specializes in ocean and fractal patterns painting. She was born in Ukraine and is currently living and working in the U.S. Cumberland has developed a painting style to highlight Natural Fractal Patterns and colors on canvas. Each painting is specifically designed to maximize the calming effects of shapes, colors and scenery. Being medically trained, she discovered that there was a growing interest in the calming effects of fractal patterns among scientists.

Using her exceptional talent, Cumberland developed a painting style that reproduces the naturally occurring patterns and colors of the sea on canvas. Her artwork is so realistic that it is often difficult to distinguish her paintings from actual photographs. Each painting is carefully designed to maximize the calming effects of shapes, colors, and scenery.



## CONCEPT DESIGN | Media: Oil on canvas

Having studied at the University of California, San Diego, I lived and spent quite a bit of time in La Jolla. Although the beach has always been a big part of my life, there were other naturalistic aspects of San Diego, which stood out from my upbringing not far away in Huntington Beach. The coastal and valley trails were an immediate draw as a way to wander from campus and delve into the natural scenery. I've elected to focus my attention on the La Jolla State Reserve and the Mission Trails parks as they were particularly impressive to me. The former will feature a prominent Torrey pine that – in contrast to the blue sky above – will be an opportunity to use painterly techniques to create impact and energy. The latter will focus on a trail with layers of foliage receding beneath a late afternoon sun. Both will feature my signature vertical separation, which creates abstraction and dynamic interplay with the natural horizon. Additional geometric abstractions, exaggerated saturated colors, and expressive paint application will unify these two pieces and align them with my signature style, which I've been developing for many years since I graduated from UCSD back in 2001.



ARTIST'S PREVIOUS WORK



Azgour is a contemporary artist interested in the space between perception and reality. His paintings are constructed from many disparate layers of paint, which go between expressive figuration and geometric abstraction. Azgour's award-winning paintings have been exhibited in galleries and museums in the United States, Europe and Asia, including solo shows at the Art Museum of Los Gatos, CA, Brennecke Fine Arts in Berlin, and Hohmann Fine Art in Palm Desert, CA. His work has been represented at many Art Fairs, such as SCOPE NYC (solo show), Art Market San Francisco and Los Angeles Art Show. He will have a solo show in Fresno Art Museum, opening January, 2025. His work is part of renowned collections around the world, including Lucile Packard Children's Hospital, Stanford University and Showtime Television Network in New York. Azgour has exhibited alongside a number of highly respected artists and regularly speaks publicly, recently at TEDx Krakow. He teaches drawing and painting courses at Stanford University.



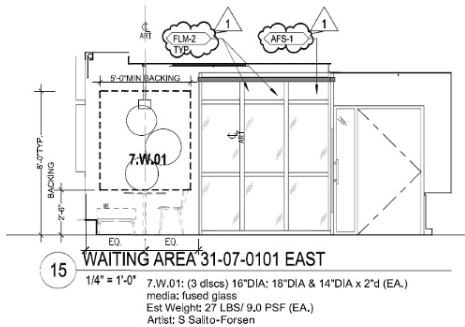
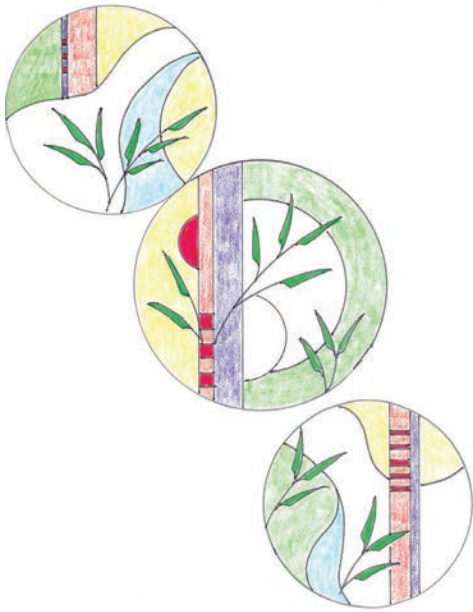
Scan here to learn more about the artist's work.

## CONCEPT DESIGN | Media: Fused glass

Fused glass process: To begin, all the different glasses that make up a particular piece must be compatible with each other in order to fuse together. I handpick each sheet of glass for the intended art piece, then run a test on small piece to confirm color. Certain types of glass have MAJOR color changes that occur during the firing and so all the glass in all my pieces must be tested first.

I'll start with a vague concept followed by a series of small sketches. Once a decision is made I then draw it up full scale. My husband begins any wood or metal work that needs to be done. While he is working on that, I start "Playing with Glass."

I will then start cutting the glass pieces to the desired shapes. Each piece must be carefully washed and dried to ensure there is no contamination. The desired form is gently arranged in the kiln, initially on a flat surface treated with a release that keeps the glass from sticking. There are usually two full layers of glass in this firing. The fusing occurs in the first firing and takes approximately 36 hours in a computer controlled kiln. The programs sometimes take months to perfect. At this point, if the piece has survived the initial firing I usually add more layers and fire again until the desired effect is achieved. The work is all done in our home studio in San Clemente.



ARTIST'S PREVIOUS WORK



Salito-Forsen has been working with glass since 1976. She originally started her glass career working for a stained-glass studio and now creates fused glass art. Assisted by her talented husband, Hal, she has opened up many exciting new avenues of expression and creativity. They are currently exploring multi-media collaborations.

Their studio provides original, one-of-a-kind kiln-formed glass for public, private and corporate spaces. Studio services range from initial conception to the fabrication and sometimes installation of the final artwork.

Salito-Forsen and husband have a glass studio in San Clemente.

They provide original, one-of-a-kind kiln formed glass for public, private and corporate spaces. Studio services range from initial conception to the fabrication and sometimes installation of the final artwork. They had been displaying their art at the prestigious "Festival of Arts, Pageant of the Masters" for the last 36 years, and this summer showing at the Sawdust Festival in Laguna Beach. After having done weekend shows for 40 years, they are now focusing on commissioned projects and have a limited show schedule.

*Sherry Salito-Forsen*



Scan here to learn more about the artist's work.



# DINING AREA

\$175,000

Sandra & Carl Bryant

Juanita Adelman

Debra D'Souza

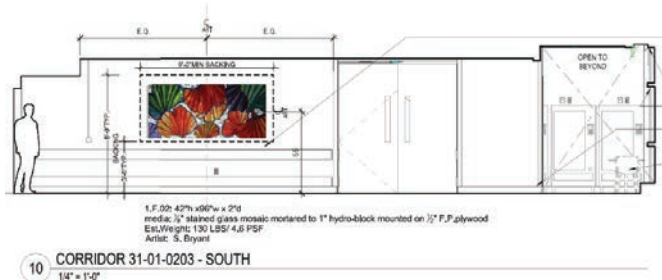
Dayton Claudio

# Sandra & Carl Bryant LYNDEN, WA



## CONCEPT DESIGN | Media: Glass mosaic

Title: Ginkgo Leaves. The ginkgo biloba tree is a special tree for us because of its strength, perseverance and longevity. It is a plant species that has been on earth since the time of the dinosaurs. Ginkgo trees are resistant to disease, beautiful and durable. The proposed mosaic artwork celebrates this strength and adaptability in a bright and colorful way. The dance of the leaves across the field signifies recovery and positivity in a vibrant palette. It is meant to inspire and rejuvenate the viewers and provide a moment of joy.



ARTIST'S PREVIOUS WORK



The Bryants have exhibited in many national mosaic exhibitions and art shows, completed many public art works all over the United States and have been featured on the cover of several textbooks and art magazines. They have created custom mosaics, as well as mosaic murals, fine art mosaics, portraits and many other custom projects. They are a self-educated artist team. They began creating glass mosaic artwork in 2001, after many years of oil painting and creating hand-made tile.

### SELECTED PROJECTS, PUBLICATIONS AND EXHIBITIONS:

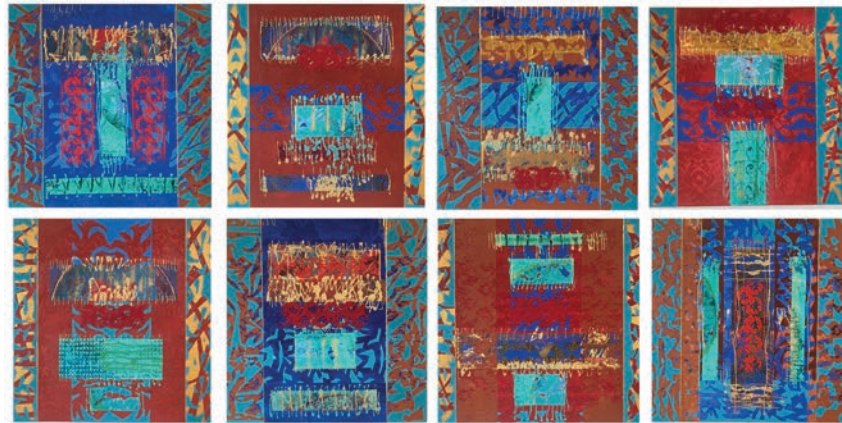
- DSHS Maple Lane Residential Rehab Facility, Centralia, WA
- Arbor Heights Elementary School, Seattle, WA
- Texas Children's Hospital, Houston, TX
- Palo Duro Canyon Mural, Amarillo, TX
- Heroes of the USCGC Tampa, Tampa Bay History Center, Tampa, FL
- Wapato High School Murals, Wapato, WA
- Holocaust Memorial, Teaneck, NJ
- City of Palm Desert: 2015 Public art call winner
- Disney Corporate Retreat murals
- Goldenvoice – AEG Live

*Sandra Bryant*



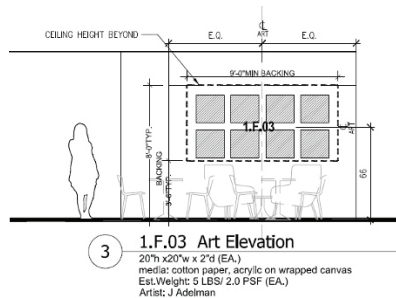
Scan here to learn more about the artist's work.

# Juanita Adelman CARLSBAD, CA / MEXICO



CONCEPT DESIGN | Media: Layers and constructions of cotton paper and paint on cotton canvas.

“Earth and Sky” is a polyptych composed of eight pieces measuring 20 by 20 inches each. It embraces rhythm, balance and harmony. The geometric construction has symbolic value. The pieces are intricate, exhibiting meticulous attention to detail. The paintings are constructed with overlaid layers of paint and texture. I want the paintings to be syncretic in forms and exciting in their content. My intention is to evoke strength and tranquility, awareness of the natural world, and to be witness of the force of the natural elements like earth and sky whose climatic happenings infiltrate my art. The beauty and power of the natural world inspire me to transmit peace and well-being to the viewer. I paint positive emotions to immerse the other in a quiet tranquil place of serenity.



ARTIST'S  
PREVIOUS  
WORK



Perez-Adelman was born in Bogotá, Colombia. She studied a Master's degree in Fine Arts at the National University of Colombia (Bogotá, Colombia) and a Master's degree in Printmaking at California State University. Pérez-Adelman's art work has been exhibited in Colombia, Germany, Mexico, Switzerland, Venezuela and in The United States of America. Her work is part of the Dictionary of Artists of the XXth Century (ARCO Madrid, February 2006). In Mexico, she has had 29 Individual exhibitions and 40 Group exhibitions. Pérez-Adelman's art work reflects the blending of the three different cultures that have shaped her life – Colombian, American and Mexican. This syncretism is clearly reflected in her paintings through the interweaving of the threads that merge and linked her personal history.



Scan here to  
learn more about  
the artist's work.

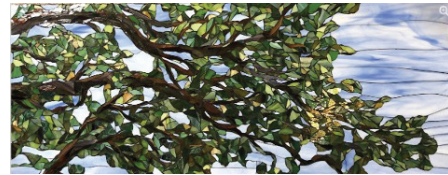
*Juanita Adelman*

# Debra D'Souza EAU CLAIRE, WI



## CONCEPT DESIGN | Media: Stained Glass Mosaic

As a child, I knew I wanted to be an artist. I loved to draw, paint and be creative. I also was an observer, noticing the clouds, trees, water and just being aware of the world around me. The same as noticing all the beauty held within a single sheet a glass. I like to say "I paint with glass," I select the color, cut the shape and lay it in. It is an honor to be creating glass mosaic art for Scripps. My concept designs are inspired by the natural beauty of California. Beautiful forests and floral fields are symbols of California's diverse landscape, the poppy is the state flower. The Poppies bright color and beautiful shape make it a perfect subject for a glass. The mighty Oak branch, with the leaves gently rustling in the breeze, is meant to bring strength, help soothe and welcome all who enter the space.



ARTIST'S PREVIOUS WORK



D'Souza was born and raised in the upper Midwest and currently lives in Austin, MN. She has a BFA in Studio Art with a painting emphasis from UW-Stout. Although she has used many mediums for her creative process, her favorite is glass. She has studied with master mosaicists world-wide. She is expanding her mosaic practice by adding fused glass elements to her designs and currently studies glass fusing with the Maestro Narcissus Quagliata. Her mosaic art is included in private and permanent collections, including Stanford University, Penn State, Health Partners, Hennepin County Medical, Mayo Health System, Marshfield Clinic and the City of Rochester, MN. Her mosaics can be found in multiple regional art galleries and she teaches workshops at a variety of locations within SE Minnesota.

Other accomplishments include, past recipient twice of a Creative Support for Individuals Grant from the Minnesota State Arts Board, a SEMAC Established Artist Grant and twice awarded an artist residency in Ireland. She continues to expand her knowledge and experience with the art of mosaic and glass.

EXHIBITIONS: Zumbrota, MN: Two Artist Exhibition, Crossings at Carnegie, Zumbrota, MN, Hudson, WI: "Breaking Assumptions" Phipps Center for the Arts, MN Mosaic Guild Rochester, MN: "Lacavore" Juried Exhibition, Rochester Art Center



Scan here to learn more about the artist's work.

*Debra B. D'Souza*

# Dayton Claudio CHICO, CA

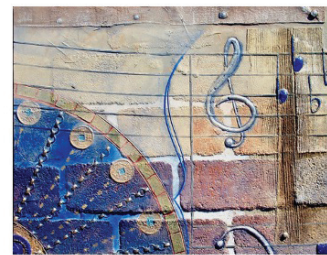
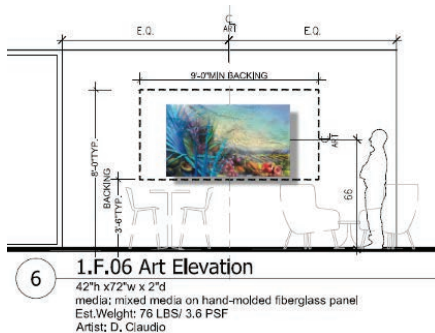


Title: "CORNUCOPIA"

The theme of this artwork is positive energy, healing and healthy living through nutritious foods. The subject matter includes California agriculture and samples of fruits and vegetables.

Painting description: The painting will consist of a textured relief glass fiber composite. It will be 3 feet high by 6 feet wide and 2 inches thick. It will be painted in oil paint and varnished.

CONCEPT DESIGN | Media: Clay-formed fiberglass & mixed media



ARTIST'S PREVIOUS WORK



Claudio has enjoyed a successful career in public art since 1995 completing many projects around the country. He has an MFA and 12 years college teaching experience. His work is an investigation into the processes of nature. Using clay as a mold, he casts highly detailed glass fiber composites, then paints these in oils.

#### SELECTED EXHIBITIONS:

- Crocker Kingsley Sacramento, California
- Duke University Durham, North Carolina
- Phillip Burton building San Francisco California
- San Jose State University California
- Chico Museum California
- Cultural Center of Carmel California

#### SELECTED PUBLIC COLLECTIONS

- Sutter Hospital Sacramento, California
- Scripps Oceanside, California
- Eskaton Retirement Community Roseville California
- Plantation Key Courthouse Florida
- Federal Courthouse Pocatello, Idaho
- Cleveland State University, Ohio
- Idaho State University Idaho Falls
- California State University Chico, California



Scan here to learn more about the artist's work.

DAYTON CLAUDIO

## **Scripps Health Foundation**

*Through philanthropy we help to heal, enhance and save lives.*

