

# THE *Signature* HEALING ARTS PROGRAM



SCRIPPS MEMORIAL HOSPITAL ENCINITAS LUSARDI TOWER



# Dear Friends,



I am always humbled by the generosity of our Scripps supporters and donors who help ensure patients receive the highest quality care here at Scripps Health. **That's why it is my honor to introduce our Signature Healing Arts Program at Scripps Memorial Hospital Encinitas.**

This collaborative effort brings together highly acclaimed artists, leading art experts and generous patrons dedicated to enhancing the comfort and healing of patients—and the enjoyment of visitors and staff.

This program is based on the growing body of research that shows how specific types of art in

hospital settings reduce stress, pain and anxiety, while making the entire health care experience better for everyone. We've engaged experts in this unique field to select artists from across the country, with an emphasis on San Diego, whose work reflects the principles of healing art. These artists have envisioned artwork, which will be displayed in the new Lusardi Tower at Scripps Encinitas. Dozens of "concept design" renderings were submitted, and those that were chosen are included in this catalog.

From original oil paintings and watercolors to fused glass and paper-cut collage, many pieces represent something iconic and uplifting about Encinitas, while others visually represent the innovation, compassion and caring of Scripps. Please take your time to view each thought-provoking concept, and visit those already commissioned and on display throughout Scripps Encinitas.

Scripps Encinitas' Healing Arts Program is made possible by the generosity of donors, who recognize the importance of aesthetics, and its role in health and well-being. In fact, the artwork you see in this catalog will be funded 100 percent through philanthropy.

I hope you will consider commissioning an original piece of art for the new Lusardi Tower. Your gift will be used to transform an artist's concept into a reality and toward the construction of our new facility. Please accept my personal thanks for investing in this unique program. Through philanthropy, you help Scripps heal, enhance and save lives.

Sincerely,

A handwritten signature in black ink, reading "John B. Engle". The signature is fluid and cursive, with the first letters of the first and last names being capitalized and prominent.

John B. Engle  
Corporate Senior Vice President  
Chief Development Officer  
Scripps Health

*For more information about becoming a Healing Arts patron, please visit **[Scripps.org/HealingArts](https://scripps.org/HealingArts)**.*



# Transforming the Health Care Experience through the Arts



**Annette Ridenour** has been a leader in health care design and arts in health for more than 40 years as president of Aesthetics, Inc. She has been described as a practical visionary for her ability to combine explorative thought with strategic thinking, focused upon implementation. She is a natural group leader and a practitioner of Generative Design, a process that fosters the expansion and evolution of core design principals over the long lifespan of projects. Through these processes, Annette guides health care leadership in the creation of art programs that support their institutional mission and goals, and helps improve the emotional well-being of patients, visitors and staff.

Annette has been a founding member of two national arts organizations: *The Society of Arts in Health* (SAH), where she served as National President, and the *National Organization of Arts in Health* (NOAH). As the co-founder and board member of NOAH, she has helped guide the field, including the creation of a *New Curriculum for Arts in Health for Arts Practitioners*, the basis of the first certification available in the field (Essentials of Arts in Health Certificate).

Annette co-authored *Transforming the Healthcare Experience through the Arts* with former Rady Children's Hospital CEO, Blair Sadler, and has also contributed numerous chapters to other books, most recently "Managing Arts Programs in Healthcare" edited by Patricia Dewey.

She has received numerous awards including:

**HFSE:** Founders Award, Lifetime Achievement in Arts in Healthcare

**Society for Arts in Healthcare:**

Distinguished Fellow

Lifetime Achievement Award

**International Academy for Design and Health:**

Use of Art in the Patient Environment, International Winner, 2012

Use of Art in Public and Private Spaces, Highly Commended, 2017

Innovation: Rejuvenation Station, 2019: Stress-relieving video & audio booth for clinical staff

**The Generative Space Award:**

St. Joseph Oakland Hospital, 2012

Rejuvenation Station, 2019: Stress-relieving video & audio booth for clinical staff

Annette assists health care organizations in developing arts programs for new projects and existing facilities. Examples of Annette's pioneering work are the award-winning art program at Lucile Packard Children's Hospital at Stanford, Penn State Health Hampden and Lancaster Medical Centers, and Scripps Health. Annette has been working as an art consultant for Scripps Health for more than 20 years.



# Scripps Health Foundation Here for Good Campaign



## OUR VISION

Philanthropy is essential to helping Scripps Memorial Hospital Encinitas build a new 185,000-square-foot tower on campus. Thanks to a generous \$25 million lead gift from Debbie and Warner Lusardi, Scripps Memorial Hospital Encinitas is beginning phase two of its master plan. The centerpiece is the Lusardi Tower, a new hospital building which will include 64 private inpatient rooms, surgical suites, and a state-of-the-art intensive care unit. It will be equipped with the latest wireless technologies, flexible surgical suites, advanced digital monitoring, and telemedicine capabilities.

With anticipated completion and opening for patient care in 2026, these private patient rooms are filled with natural light and include flexible space for clinical care, patient, and family use. Nurses are always in close proximity. This advanced acute care facility will make delivery of care throughout the campus more efficient, ultimately providing a better health care experience to our growing population.



By giving for good, your support will help Scripps Memorial Hospital Encinitas make a difference in the health and quality of life of our community. We've been here for nearly 100 years, and we're invested in being here far into the future.

We're here for good—and we'd like you to join us at Scripps Memorial Hospital Encinitas.

Learn more about our Here for Good Campaign at [Scripps.org/HereForGoodCampaign](https://scripps.org/HereForGoodCampaign).



# The Signature Collection



**The Signature Collection for the Scripps Encinitas Acute Care Building celebrates the natural beauty of the North County Coastal area.** With its diverse array of natural features, artists were invited to draw inspiration from the distinct characteristics of Encinitas' five neighborhoods: Cardiff-by-the-Sea, New Encinitas, Old Encinitas, Olivenhain, and Leucadia. Each neighborhood possesses its own unique charm, and the artwork reflective of these areas aims to foster a sense of belonging for the patients and families visiting this facility.

Every artist involved in designing a distinctive artwork for Scripps Encinitas was deeply moved by the experience. Many of them had encountered similar health care circumstances themselves, infusing their creations with personal messages of healing and hope. Others drew inspiration from the experiences of their loved ones facing similar challenges. Their overarching goal was to ensure that the art would resonate with viewers, captivating them emotionally and fostering positivity for all who encounter it.

Informed by the principles of biophilic expression, our methodology prioritizes the development of healing environments that leverage the proven psychological and physical health advantages of nature. This approach is supported by comprehensive research and aims to optimize the therapeutic potential of natural elements within our spaces.

The selection process gave priority to local artists and embraced a wide array of artistic media, from paintings and mosaics to fused glass, wire, wood and handmade paper. Through this diverse range of mediums, artists offered innovative interpretations of familiar landscapes, inviting viewers into a realm of creative expression conducive to nurturing the imagination and fostering healing. These "enriched environments," validated by neuroscientists and biologists, have been shown to yield positive outcomes across various domains, including health, learning, and relationships.

Numerous testimonials affirm the profound impact of art within Scripps hospitals, providing patients with invaluable moments of solace and contemplation. We cordially invite you to become a part of our esteemed community of patrons, supporting the creation of Signature Collection artworks at Scripps locations. Your participation contributes to our enduring legacy of fostering hope and facilitating healing for all.

Annette Ridenour, *Principal of Aesthetics, Inc.*  
Sorina Igreti, *Project Manager*



# Table of Contents

## MAIN ENTRY FEATURE

Amy Genser . . . . .	7
----------------------	---

## COLORS CAFE

Bernadette Twomey . . . . .	9
Cynthia Fisher . . . . .	10
Betty Busby . . . . .	11

## LEVEL 1 WAITING

Alison Haley Paul . . . . .	13
-----------------------------	----

## LEVEL 1 CORRIDOR

Neil Murphy . . . . .	15
-----------------------	----

## LEVEL 2 ELEVATOR LOBBY

Larissa Strauss . . . . .	17
---------------------------	----

## LEVEL 2 WAITING

Courtney Mattison . . . . .	19
-----------------------------	----

## LEVEL 2 CORRIDOR

CW Roelle . . . . .	21
---------------------	----

## LEVEL 3 ELEVATOR LOBBY

Yulia Hanansen . . . . .	23
--------------------------	----

## LEVEL 3 WAITING

Byron Sutherland . . . . .	25
----------------------------	----



# MAIN ENTRY FEATURE

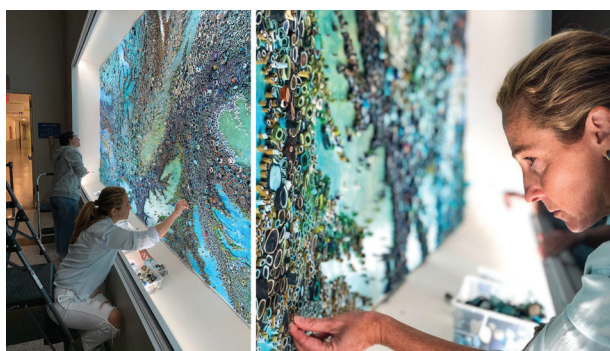
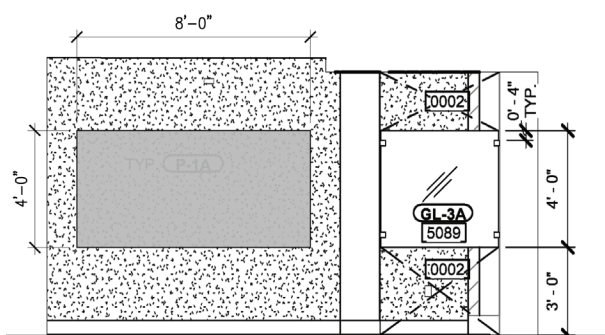






## CONCEPT DESIGN | Media: Mulberry paper, acrylic paint and other materials

It is my honor to build a work of art that combines SoCal magic and Scripps genius. The artwork will be alive and energetic, reflecting the vitality of the hospital staff, patients and visitors. The colors and composition are inspired by the natural landscape of Encinitas. It will embody the warm earth tones and the cool blues of the Pacific Ocean. The individual, tiny paper circles are combined to form a large, cohesive image. They are micro pieces alone, but build a macro world together, like biological processes, natural phenomenon, and communities that are sums of their parts. When my son decided to attend UC Irvine last year, I was thrilled because I now have an official excuse to visit and explore.



ARTIST'S PREVIOUS WORK



Scan here to learn more about the artist's work.



Connecticut artist Amy Genser has been creating mixed-media artwork for the past 21 years. Her work is macroscopic, think colossal, like the movement of tectonic plates, shifting waterways, or ravaged landmasses in a slow slide. It is also microscopic, mirroring duplicating cells or the tiniest whisper of complex thought. She works with paper, paint and other materials. The natural world is a clear source for Amy's work. She is fascinated by the flow of water, the shape of beehives, and the organic irregularity of plants, flowers, rock formations, barnacles, moss and seaweed. Her pieces bring to mind aerial landscape views, satellite imagery, and biological cellular processes. Amy's work can be found in hospitals, corporate offices, private collections and museums worldwide.

Amy lives in West Hartford, CT with her husband, three sons and two dogs.

*Amy Genser*

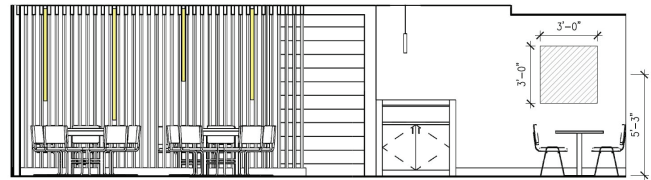
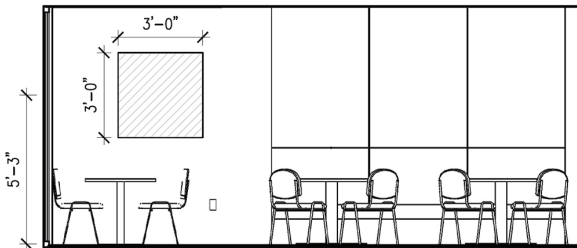


# COLORS CAFE





DESIGN | Media: Acrylic on canvas



B Twomey is an Australian abstract artist who creates bold canvas art from her Brisbane studio.

B's artwork is striking, inspired by color, mood, emotion and season. Her artwork celebrates Australian life in bold colors and forms.

Born and raised in Far North Queensland, Bernadette has traveled extensively in both Australia and overseas. This lived experience through place and the emotional memory of color is reflected in her stunning, bright, bold art.

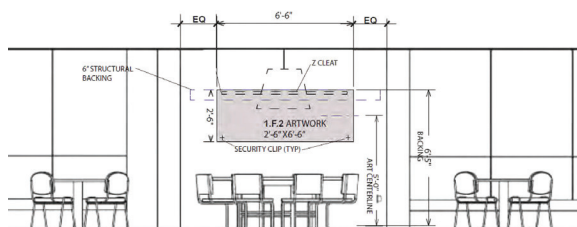
"Immersing myself in a painting creates two things, a deeply intricate outcome on the canvas and a wonderful simplification in my brain. Overthinking is eliminated once I have a brush in my hand and in an almost trancelike state, I paint. New shapes emerge and new species of plant life are created as I fill the canvas with color."





## CONCEPT DESIGN | Media: Broken ceramics

My design is based on a mosaic I previously created of vases and crockery. For me, the feel of the artwork brings to mind an old fashioned sense of home, and I think it is a great choice for the cafeteria setting. One of the things that makes this mosaic special is the use of broken ceramics. Re-purposing old plates is artistic recycling that works on multiple levels: recognizing the beauty in commonplace objects, making something 'broken' whole again, and in the case of this mosaic, the whimsy added by having mosaic subject matter – vases and crockery – be constructed of the same materials.



ARTIST'S PREVIOUS WORK



I have been a professional artist for over thirty-five years, first as a successful children's book illustrator (30+ books published!) and since 2000, focusing on mosaics. At Big Bang Mosaics I create installations in public, residential, and corporate settings nationwide. My diverse body of work ranges from illustrative to painterly to non-representational. My abstract mosaics have received national and international awards. I conduct school and community projects, including, since 2013, yearly visits to Guatemala where I am helping transform a small town into a mosaic destination. I teach mosaic workshops in my studio, at art and craft centers across the country as well as virtually. MOSAICS are my world.

*Cynthia Fisher*



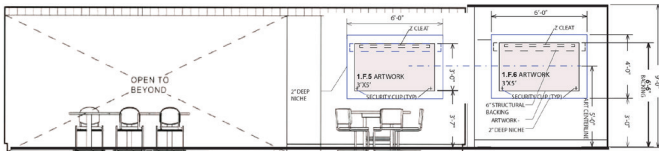
Scan here to  
learn more about  
the artist's work.





## CONCEPT DESIGN | Media: Hand painted textiles

Originally inspired by the intricate forms and wildly varied colors of lichen, which is found all over the world, I plan to create a diptych of works that relate to each other in design but provide a visual flow across the display area. Using artist designed cut out non woven pieces combined with hand painted cottons and silks combined with detailed stitching, the two works will provide a lively backdrop for the proposed dining area.



ARTIST'S PREVIOUS WORK



Betty

After graduating from the Rhode Island School of Design with a ceramics major, Betty Busby founded a custom ceramic tile manufacturing firm in Los Angeles. After nearly 20 years of running the firm, she sold the business in 1994 (it is still in operation to this day). Upon relocating to New Mexico, she changed the focus of her artwork to fiber, taking it full time in 2004.

Her manufacturing background has lead to constant experimentation with new materials and techniques that fuel her work. Originally inspired by Amish quilts at the Kutztown County Fair near her childhood home in Pennsylvania, her work has made the journey from bed quilts to mixed media sculpture, and is constantly evolving and heading in new directions.

The classic fractal structures of the sub microscopic world are a persistent model, as are natural processes, such as oxidation, replication and growth.

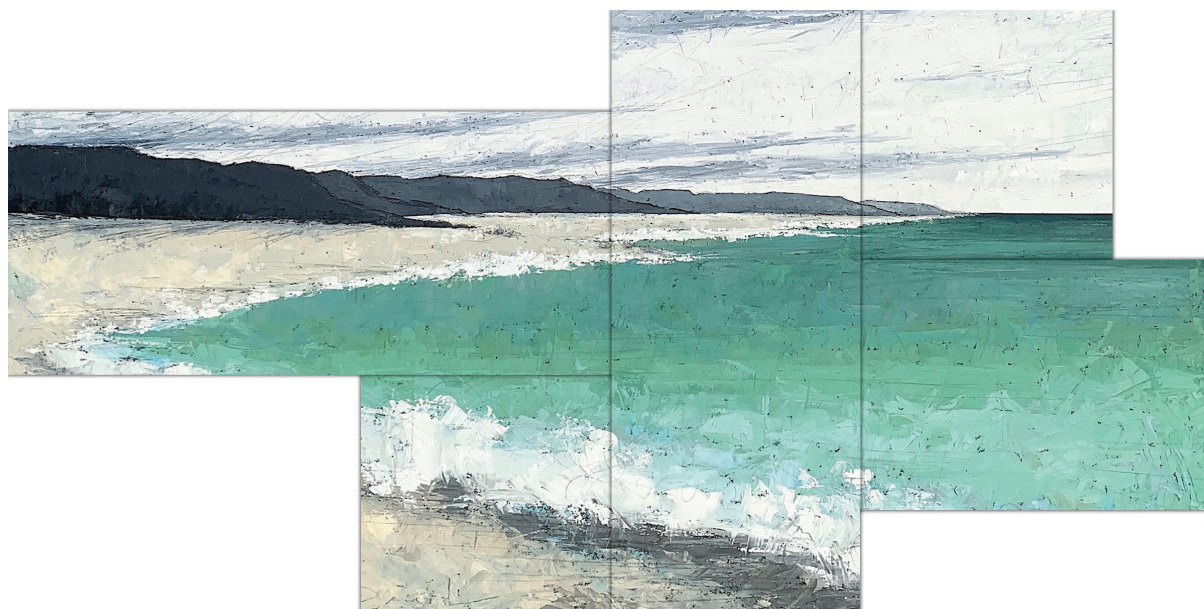


Scan here to  
learn more about  
the artist's work.



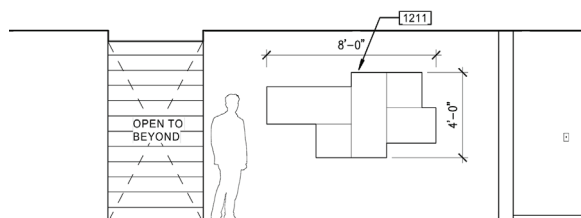
# LEVEL 1 WAITING





## CONCEPT DESIGN | Media: Highly textured mixed media paintings

My approved concept design is an unusual piece from my Collective Series. My technique evolved from continuous exploration and sheer curiosity, and my Collective Series delves into traditional expectations of my painting perimeters and parameters. I wanted to experiment with different versions of a diptych, triptych, or in this case a quintych and pushing the rules and expectations. My idea was to abstract a traditional seascape even further than my usual technique. Using a mix of oil, wax, pigment, charcoal and graphite on five individual canvases, this is the embodiment of the textured and subtly colored landscapes that I am known for.



ARTIST'S PREVIOUS WORK



Alison Haley Paul is a contemporary painter of lavishly textured landscapes full of nuanced color. Her work conjures up connotations and geographical memories. The places she paints may not be physically specific, but they are immediately recognizable.

Alison grew up in Connecticut and majored in Art and Design at Pratt Institute in Brooklyn, NY. There she studied ceramics with Byron Temple, a disciple of Bernard Leach, and design with sculptor David Lee Brown. After receiving a BA in Interior Design at the Design Institute in San Diego, and many years as a successful interior designer, she has returned to her studio full time.

Her work has been exhibited in numerous museums, solo shows, and public and private collections worldwide.



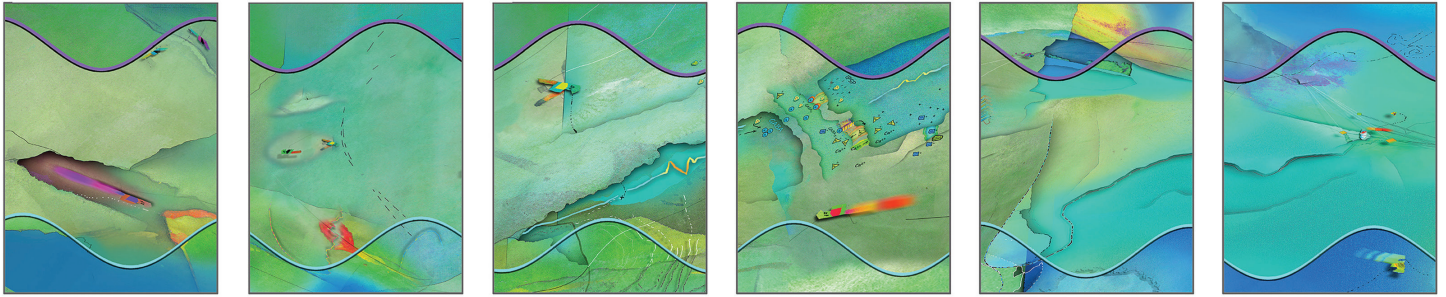
Scan here to learn more about the artist's work.

ALISON HALEY PAUL



# LEVEL 1 CORRIDOR



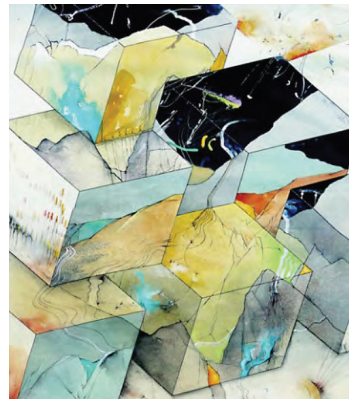
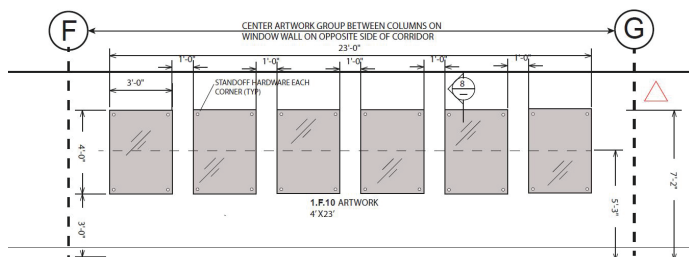


## CONCEPT DESIGN | Media: Acrylic paints, inks, printing, collage, and digital technology

Artwork Title: GABA Dreamtime

Just as music can bring calm, so too can a gently rhythmic artwork.

This series of six restfully colored panels has a directed purpose — to reduce anxiety that comes with unknowns and difficulties, and instead, bring a sense of calming “flow.” The design’s intrigue will pull viewers into a visual treat. They’ll follow the graceful curves unfolding beside them as they walk the corridor. Patients will feel peace as they ride the gentle waves. The aqua colors, with hints of warm oranges, provide comfort. Neuroscience plays a role here too. The calming neurotransmitter GABA is represented at a cellular level in the design.



ARTIST'S  
PREVIOUS  
WORK



*Neil Murphy*

Neil Murphy, born and raised in Hawaii, is inspired by tropical colors and the timely nexus of art and science. Shapes from nature, themes from neurobiology, observations of light — all energize his work. Much of his art deals with destigmatizing issues that confront those with mental health challenges.

Neil's wide audience includes art galleries, private collectors, biotech, healthcare, and universities. He delights in working with interior designers, curators, and architects. His art has brought him numerous awards and certificates of honor — one of the latter for his work bringing art activities to children with cancer.

He attended the San Francisco Art Institute, UCSF, and Stanford. His career path includes fine art, web & graphic design, audio engineering & electronic music composition. Skills and techniques used in those fields take an active role in his current mixed media artworks.



Scan here to  
learn more about  
the artist's work.



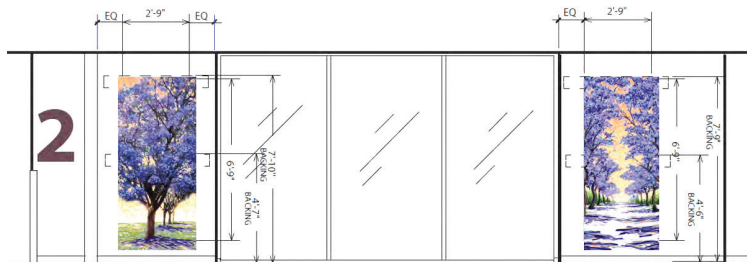
# LEVEL 2 ELEVATOR LOBBY





## CONCEPT DESIGN | Media: Stained glass mosaic

Years ago, while inspired by a beautiful jacaranda tree among lemon orchards, I created a small square mosaic of that scene. When I was asked to create two narrow, vertical compositions based on the same idea for Scripps Hospital, I was excited at the wonderful opportunity to reinterpret that same beautiful jacaranda view. In the first panel, I took the idea of the row of lemon trees and turned it into a row of jacarandas going into the distance. In the second panel, I created a scene of two rows of jacarandas with the orchards on either side. In both compositions, I kept the purple shadows and the sunrise colors in the sky. The speckled light and colors bounce around and create an overall dreamy effect which feels almost otherworldly, while still depicting essentially realistic scenes. Translated into glass, they will reflect the light, and I hope they will imbue a sense of lightness and healing to one's heart.



ARTIST'S PREVIOUS WORK



Strauss's work evokes a sense of awe and wonder in the natural world. Her use of glass transcends what can be accomplished in painting by incorporating a variety of textures and luminous, sparkling surfaces, ultimately creating a magical realm of dancing color and light. Her work is widely collected in California and is featured in Cottage Hospital, Goleta Valley Hospital, Stanford Children's Hospital, and various public and corporate spaces.

Strauss currently lives and works near the beach in Ventura, CA and on a ranch at the edge of a forest outside of Joseph, Oregon.



Scan here to learn more about the artist's work.

*Larissa Strauss*



# LEVEL 2 WAITING



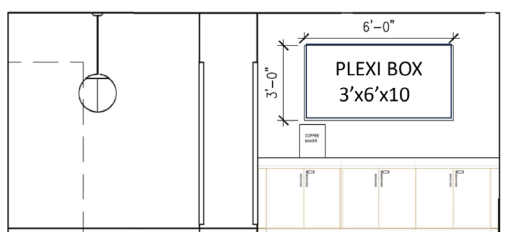


## ARTIST STATEMENT

Media: Glazed stoneware and porcelain

My large-scale, meticulously designed wall reliefs are often composed of hundreds or thousands of individually hand-crafted and glazed stoneware and porcelain pieces that celebrate the diversity and complexity of invertebrate animals inhabiting coral reefs, such as corals, anemones, sponges and tunicates. I sculpt hollow forms by pinching together coils of clay and use simple tools to texture each piece, often poking thousands of holes to mimic the repetitive growth of coral colonies. My glazes reflect the vibrant tones and textures of a healthy reef, often juxtaposed against white glazes to emphasize the stark contrast of coral bleaching on reefs stricken by warming seas.

By bringing the seemingly-alien forms of tropical marine life above the surface and into view, my work aims to spark a sense of wonder in viewers that inspires them to protect the natural environment upon which we all depend.



ARTIST'S PREVIOUS WORK



Internationally recognized artist and ocean advocate Courtney Mattison handcrafts intricate and large-scale ceramic sculptural works that visualize climate change through the fragile beauty of marine life. Her background in ocean conservation science and policy informs her site-specific work which has been commissioned for permanent installation in hospitality, institutional, workplace, retail and residential settings across the U.S., Europe and Asia, including the U.S. Embassy in Indonesia and The Seabird Resort in Oceanside, California.

Mattison received an interdisciplinary Bachelor of Arts degree in marine ecology and ceramic sculpture from Skidmore College in 2008 and a Master of Arts degree in environmental studies from Brown University with thesis coursework at the Rhode Island School of Design in 2011.



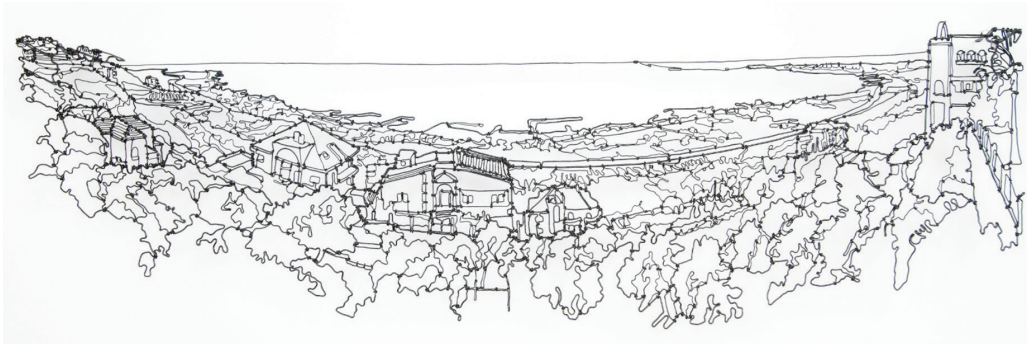
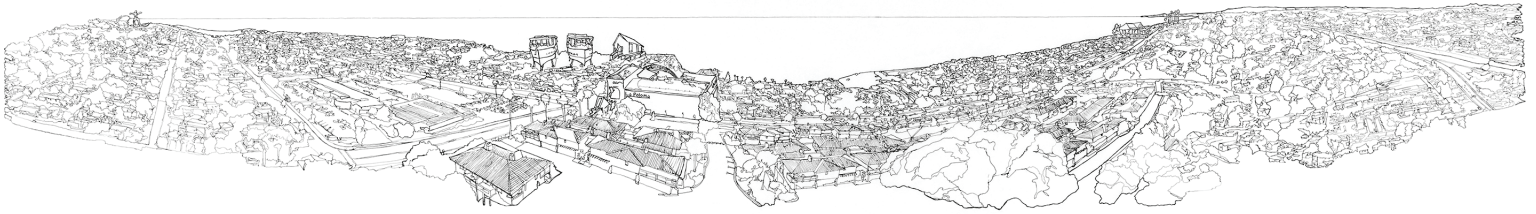
Scan here to learn more about the artist's work.

*Courtney Mattison*



# LEVEL 2 CORRIDOR



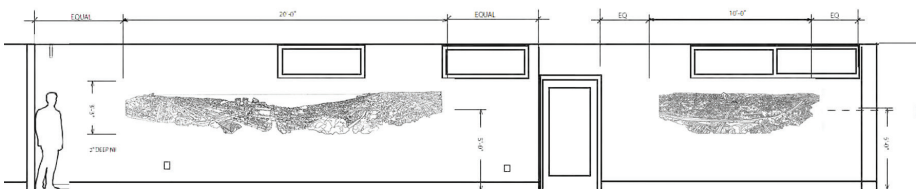
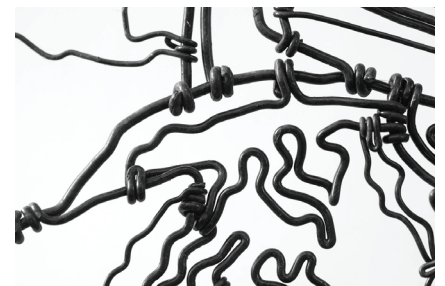


## CONCEPT DESIGN | Media: Metal wire

My work has always been about a sense of place and memory, an awareness of where I am, where I've been, what I have or have had with me along the way. My concept for the medical center is to make two wire-line drawing portraits of Encinitas, one looking out and one looking in, both highlighting key landmarks in the city such as the Magic Carpet Ride sculpture, the Boathouses, La Paloma Theatre, The Botanic Garden and the Colony Olivenhain Meeting Hall (among others). My hope is that hospital patients, visitors or staff walking by would recognize the places they know, and they would feel part of a larger community that they can relate to in a specific way.



ARTIST'S  
PREVIOUS  
WORK



CW Roelle is a graduate of The Maryland Institute College of Art and a Robert and Margaret MacColl Johnson Fellow. He began drawing with wire almost 30 years ago when (while drawing on paper) he wanted to pick the line up off the page and hold it in his hands. His work has been exhibited in countless gallery shows and is in many private and corporate collections including The Newport Art Museum, Women & Infants Hospital and Fidelity Investments. He currently lives in western Rhode Islands with his wife and twin sons.



Scan here to  
learn more about  
the artist's work.





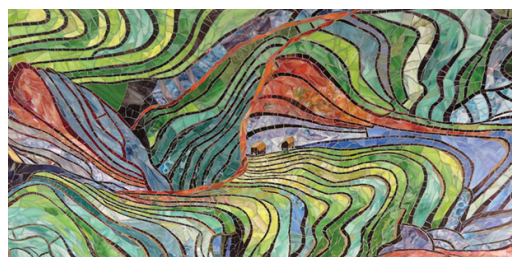
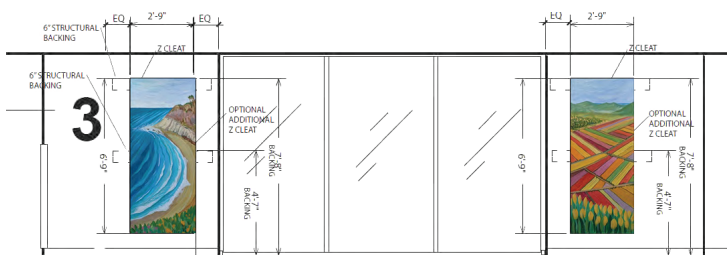
# LEVEL 3 ELEVATOR LOBBY





## CONCEPT DESIGN | Media: Stained glass mosaic

These vertical panels, each measuring 6'9" x 2'9", depict two distinct landscapes found in the Encinitas area. The first panel, titled *The Shoreline of Leucadia*, captures the natural beauty of the shoreline. Here, the landscape remains largely untouched by human intervention, evolving only through the gradual processes of land and ocean movement over geological time. The towering cliffs of Leucadia, the ocean waves, and the vibrant blooms of coastal flowers unite to form this pristine natural vista. The second panel, *Flower Fields of Encinitas*, portrays a landscape that has been transformed by human hands into a mesmerizing tapestry of vibrant colors and geometric patterns. These flower fields, a hallmark of the region, offer a striking juxtaposition between nature's splendor and human artistry. As the eye follows the landscape towards the horizon, distant hills come into view, serving as a reminder of the enduring presence of nature. Both panels are unified by carefully selected color palettes and compositions, creating a harmonious visual narrative. These works will be brought to life through the meticulous artistry of mosaic technique, using different colors of stained glass to convey the essence of these distinctive landscapes.



ARTIST'S  
PREVIOUS  
WORK



Yulia Hanansen is a second-generation artist, and recipient of numerous awards for her mosaic and printmaking artwork, including "Best in Show" and "Juror's Choice" awards at Mosaic Arts International. Her works have been exhibited in galleries nationwide and internationally.

Artist's latest works represent her fascination with themes of nature, cosmos, climate change and the connection of human beings to it. She is interested in depicting places and natural phenomena that often can only be seen with the help of technology. Her personal and experimental

artwork uses the layered glass mosaic technique, with the image being "extruded" from the surface. This technique is about infinity, as a virtually unlimited number of tiles can be applied this way. The *Water, Fire, and Starscapes* series have been created using this technique. Yulia also has a passion for more earthly subjects such as flowers, landscapes, and close-ups of nature.

Yulia received a bachelors of fine arts degree from the Cooper Union for the Advancement of Science and Art, an M.A. from the University of Michigan, and a master of fine arts degree from Columbia University.

*Yulia Hanansen*

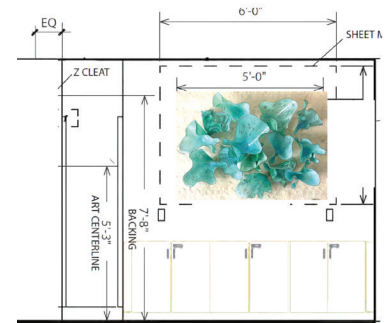


Scan here to  
learn more about  
the artist's work.



# LEVEL 3 WAITING





## CONCEPT DESIGN | Media: Hand-blown glass

Drawing inspiration from the serene beauty of water and shells, my hand-blown glass creations come to life in shades of blues, greens, and whites. Each unique piece is sculpted with care, mirroring the intricate patterns found in nature — no two are alike, just like snowflakes. When these individual elements come together to form a larger composition, they create a sense of healing, calmness, and purity, aiming to inspire all who gaze upon them.



ARTIST'S PREVIOUS WORK



Bryon, a San Diego native, combines elegant design with rich, vivid color creating original, one-of-a-kind hand-blown glass art. He studied at the prestigious Corning Museum of Glass in New York and continued his mastery of the art side by side with Davide Salvadore at Pillchuck School of Glass, founded by the renowned glass artist Dale Chihuly.

As a master colorist, Sutherland's work is recognized for its distinctive color-combinations and ardently developed formulas, offering dazzling art that simply commands to be looked at. His unique style has produced an exceptional body of work that is sought after by galleries, garnered first-place awards in heavily juried exhibitions, and created stunning installations for private collectors.



Scan here to learn more about the artist's work.

*Bryon Sutherland*



## **Scripps Health Foundation**

*Through philanthropy we help to heal, enhance and save lives.*

